



# Technical Specifications

| Product Information:        | CLEVER CLICK PLUS |   | CLEVER CLICK  |                                       |                   |
|-----------------------------|-------------------|---|---------------|---------------------------------------|-------------------|
|                             | Wood              | Stone   | Wood          | Stone                                 |                   |
| Level of use                | EN ISO 10874      | 23 - 33 - 42                                    | 23 - 33 - 42  | 23 - 31                               | 23 - 31           |
| Total thickness             | EN ISO 24346      | ca. 4.50mm                                      | ca. 4.50mm    | 4.2mm                                 | 4.2mm             |
| Wear layer                  | EN ISO 24340      | ca. 0.55mm                                      | ca. 0.55mm    | 0.3mm                                 | 0.3mm             |
| Wear layer PUR treatment    | -                 | Superguard®                                     |               |                                       |                   |
| Total weight kg/m²          | EN ISO 23997      | ca. 7.680                                       | ca. 7.680     | 7.625                                 | 7.625             |
| <b>Size &amp; Packaging</b> |                   |   |               |                                       |                   |
| Plank / Tile size           | EN ISO 24342      | 191mm x 1,316mm                                 | 324mm x 655mm | 191mm x 1,316mm                       | 500.6mm x 604.6mm |
| Pieces per box              | -                 | 7   | 7             | 8                                     | 11                |
| Coverage per box            | -                 | 176m²   | 149m²         | 2.01m²                                | 2m²               |
| <b>Test Results</b>         |                   |   |               |                                       |                   |
| Inflammability              | EN 13501          | Bfl-S1  |               |                                       |                   |
| Scratch resistance          | EN ISO 660-2      | Class T   |               |                                       |                   |
| Squareness & straightness   | EN ISO 24342      | ≤ 0.35mm  |               |                                       |                   |
| Slip resistance             | EN 13893          | DS  |               |                                       |                   |
| Slip restraint              | DIN 51130         | R9 / R10  | R9 / R10      | R10                                   | R10               |
| Residual indentation        | EN ISO 24343-1    | ≤ 0.10 mm                                       |               |                                       |                   |
| Furniture leg resistance    | EN ISO 16581      | No cracks, no damage                            |               |                                       |                   |
| Curling                     | EN ISO 23999      | ≤ 2mm   |               |                                       |                   |
| Electrical resistance       | EN 1081           | ≤ 10³hm   |               |                                       |                   |
| Dimensional stability       | EN ISO 23999      | Norm. ≤ 0.25%. Average result measured: ≤ 0.05% |               |                                       |                   |
| Heat insulation             | EN ISO 10456      | 0.25w/(m.K)                                     |               |                                       |                   |
| Thermal resistance R        | EN 12664          | 0.0159m².K/W                                    | 0.0159m².K/W  | 0.0154m².K/W                          | 0.0154m².K/W      |
| Electrostatic performance   | EN 1815           | < 2kV   |               |                                       |                   |
| Fomaldehyde group           | EN 717-1          | E1  |               |                                       |                   |
| Acoustic insulation         | EN ISO 717-2      | 4dB   |               |                                       |                   |
| Castor chair resistance     | EN ISO 4918       | No damage to wearlayer, no delamination         |               |                                       |                   |
| Stain resistance            | EN ISO 26987      | Very good                                       |               |                                       |                   |
| Light fastness              | EN ISO 105-B02    | ≥ 6   |               |                                       |                   |
| Underfloor heating          | EN 12524          | Suitable, max 27°C                              |               |                                       |                   |
| Resistance to chemicals     | EN 423            | Very good                                       | Very good     | -                                     | -                 |
| Warranty                    | -                 | 20 yrs Residential / 10 yrs Commercial          |               | 12 yrs Residential / 5 yrs Commercial |                   |

The warranty covers manufacturing defects and premature wear in the event of normal use.

Modern Printers 066 7721739

## CLEVER CLICK FLOOR

QUICK AND EASY LUXURY VINYL FLOORING



Unit 57b, Hebron Industrial Estate, Hebron Road, Kilkenny, Ireland. R95 KX64  
 +353 56 7752866  
 info@enviroclad.com  
 www.enviroclad.com  
 www.shop.enviroclad.com  
 facebook.com/enviroclad

Unit 57b, Hebron Industrial Estate, Hebron Road, Kilkenny, Ireland. R95 KX64  
 +353 56 7752866  
 info@enviroclad.com  
 www.enviroclad.com  
 www.shop.enviroclad.com  
 facebook.com/enviroclad

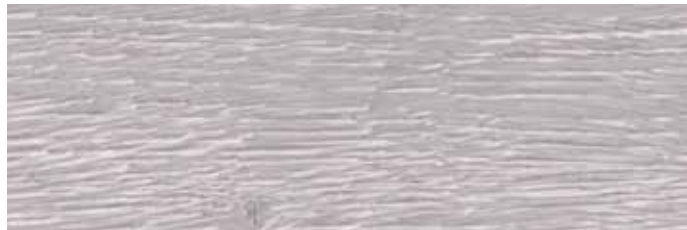


# CLEVER CLICK

Colour Selection • Thickness: 4.2mm • Wear Layer: PU 0.30mm



Fontana Oak



Cleveland Oak



Huntsville Oak



Pasadena Tile



Pomena Tile



HUNTSVILLE OAK



POMENA TILE

| Timber Effect - Clever Click |                |  |                     |                          |             |
|------------------------------|----------------|--|---------------------|--------------------------|-------------|
| Description                  | Size No.       |  | Price Each inc. VAT | Price Per m <sup>2</sup> | Total Due € |
| Fontana Oak                  | 191mm x 1316mm |  |                     |                          |             |
| Huntsville Oak               | 191mm x 1316mm |  |                     |                          |             |
| Cleveland Oak                | 191mm x 1316mm |  |                     |                          |             |
| Tile Effect - Clever Click   |                |  |                     |                          |             |
| Pasadena Tile                | 300mm x 605mm  |  |                     |                          |             |
| Pomena Tile                  | 300mm x 605mm  |  |                     |                          |             |

(Pricing correct at the time of brochure print, but maybe subject to change)

# CLEVER CLICK PLUS

Colour Selection • Thickness: 4.2mm • Wear Layer: PU 0.55mm



Barn Oak



Smoked Oak



Dorato Stone



Ocean Slate



Olympia Stone



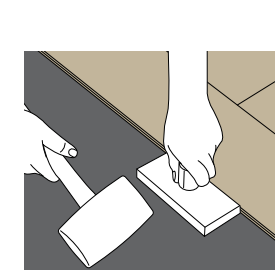
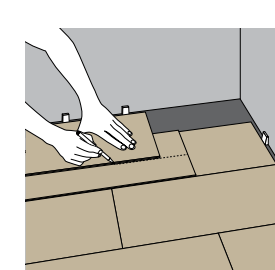
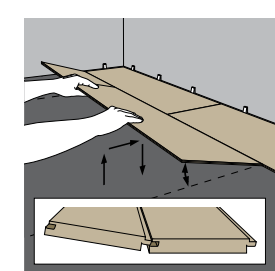
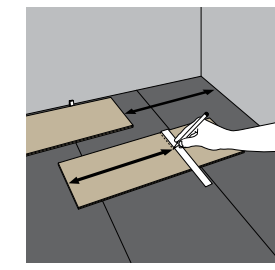
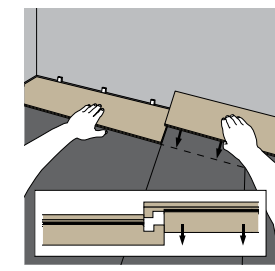
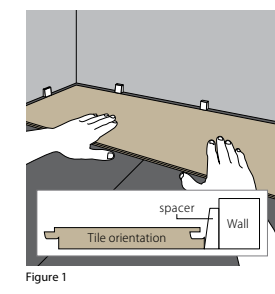
Venetian Stone Grey



Venetian Stone Ice

| Timber Effect - Clever Click Plus |                |  |                     |                          |             |
|-----------------------------------|----------------|--|---------------------|--------------------------|-------------|
| Description                       | Size No.       |  | Price Each inc. VAT | Price Per m <sup>2</sup> | Total Due € |
| Barn Oak                          | 191mm x 1316mm |  |                     |                          |             |
| Marsh Wood                        | 191mm x 1316mm |  |                     |                          |             |
| Smoked Oak                        | 191mm x 1316mm |  |                     |                          |             |
| Whitewash Pine                    | 191mm x 1316mm |  |                     |                          |             |
| Tile Effect - Clever Click Plus   |                |  |                     |                          |             |
| Dorato Stone                      | 324mm x 655mm  |  |                     |                          |             |
| Ocean Slate                       | 324mm x 655mm  |  |                     |                          |             |
| Olympia Stone                     | 324mm x 655mm  |  |                     |                          |             |
| Venetian Stone Grey               | 324mm x 655mm  |  |                     |                          |             |
| Venetian Stone Ice                | 324mm x 655mm  |  |                     |                          |             |

(Pricing correct at the time of brochure print, but maybe subject to change)



- RECOMMENDED TOOLS**
- Broom and/or vacuum cleaner
  - Tape measure
  - Pencil
  - Set square and ruler
  - Utility knife
  - Rubber mallet
  - Tapping block

## GENERAL CONDITIONS

The installation of Clever Click is straight forward and follows the same guidelines that apply to all quality resilient tile floors. Good preparation is essential for a trouble-free installation. Clever Click can be laid on concrete, timber, stone and many other subfloors, which have been suitably prepared.

Site conditions must comply with the relevant national regulations. Clever Click is not suitable for external installation or unheated locations but it can be used with under-floor heating providing it is switched off for 24 hours before and after laying (the maximum permitted surface temperature is 28C/81°F). Tiles and sub-floor must be allowed to stabilise to a consistent temperature between 18C and 27°C (64°F and 81°F) for a period of 24 hours before and after installation.

Tiles must be stored flat. Following installation, Clever Click should be protected from heavy traffic for 24 hours and must not be washed for 24 hours. Always follow other manufacturers' recommendations when using their proprietary materials for sub-floor preparation.

## PREPARATION

- The floor should be fitted at a room temperature of minimum 18°C/62°F and maximum 27°C/80°F.
- Before installation, check all panels in daylight for possible defects or discrepancies in colour or shine.
- Check that the tongue and groove of the click profile is free from dirt and undamaged.
- For best results mix at least two packs when fitting to avoid repetitions in the pattern. It is also preferable only to use material from the same batch in a single room.
- The surface beneath the floor must be sufficiently prepared in advance to guarantee successful fitting of the floor covering. In particular, it must be clean, dry, smooth, firm, level, free from defects and not contaminated with grease, oil or chemicals.

## STEP-BY-STEP INSTRUCTIONS

Clever Click is a "floating" floor. Never glue or fix the panels to the surface below. The flooring can be installed wall-to-wall, however in large areas (greater than 50m<sup>2</sup>) or where the floor may be exposed to unusually wide temperature ranges (such as where under floor heating is used, in a conservatory or areas adjacent to a south facing window), then it is advisable to use a 5mm space around the edge, as appropriate.

For surfaces larger than 50m<sup>2</sup>, we advise that an expansion joint of 5mm is created around the perimeter of the room. In addition, should a single wall or run be longer than 10 linear metres, then a 5mm expansion joint should be allowed around the perimeter. If you are uncertain of the requirements, please contact your retailer who can confirm the exact requirements.

The Clever Click system panels can be joined in two different ways; either tongue-in-groove or groove-in-tongue. The simplest procedure, however, is groove-in-tongue. The advantage of the Clever Click system is that it allows you to choose your own starting position.

Moreover, you may work either from left to right or from right to left, whichever is best for you. Depending on the direction in which you work, you are advised to begin from either a corner or a door. It is advisable to begin with the groove side of the plank towards the wall and work from left to right.

- Measure the room carefully to determine the central axis, from which the first row to be laid is outlined.
- Check whether the first row of panels needs to be narrowed. If not, the lower groove lip of the first row of panels need to be removed. Use a utility knife to neatly cut off the lower groove lip.

- Begin by laying the first row in the corner of the room on your left hand side as you are looking at the wall. Always work from left to right and with the tongue towards yourself. (Figure 1)
- Lay the first row in a straight line and click the head ends together. Put the short side of the profile into head end of the previous panel and press the panel downwards. It is recommended to use a rubber mallet for connecting the head ends so that the joint fits securely. Continue laying the first row in the same way until you get to the last piece.

## (Figure 2)

- For the last piece, measure the last plank to ensure a tight fit to the wall. Then cut away the marked piece and fit the end panel in the same way as the previous panels. When cutting the panel with a utility knife, make sure that you cut through the wear layer before breaking the panel. (Figure 3)
- For an attractive and natural appearance, we advise you to use the piece left over from row 1 as the first piece in the next row, as long as the remaining piece is at least 1/3 of the total plank length. Do this for all subsequent rows.

- Fit the second row as you did for the first: start on the left side and slide the groove of the panel under an angle of about 25° over the tongue of the previous row and click the groove into the tongue by laying down the panel while pushing it firmly against the first row. (Figure 4)
- Then fit the second panel by sliding the groove under at an angle of 25° into the tongue of the previous row. Position the corner of the head end against the previous panel and then drop the short side of the profile into the head end of the previous panel and push downwards. Use a rubber mallet for connecting the head ends so that the joint fits securely. Repeat until you reach the end of the row.
- To ensure a firm Click installation, it is recommended that the planks are tapped together along the long edge with a tapping block and a rubber mallet. This will ensure that the Click mechanism is firmly locked during installation, providing a secure joint and avoiding any movement after the installation has been completed. (Figure 5)

- To fit the last row of panels you will usually need to narrow them. Do this as follows: lay a panel on top of the previous row with the groove towards the wall, lay another panel upside down up to the edge of the wall and mark the panel underneath. Cut the panel to size and fit the last row. (Figure 6)

- Door posts and heating pipes also need to be individually fitted. First cut the panel to the right length. Then place the panel next to the object and draw the correct fitting. Next, cut the panel to size. Doorposts can also be sawn to size if necessary to lay the floor beneath them. For cutting around difficult areas such as door posts, heating pipes and other interior furniture; the use of a Jigsaw with the correct plastic cutting blades is suitable and will avoid unsightly cuts at the perimeter of the room.

## GENERAL FLOOR MAINTENANCE

### Daily sweeping and dust mopping

- Pick up litter and thoroughly sweep the floor area.
- Pick up debris with dustpan and brush or vacuum.
- Vacuum walk-off mats and crevices at entrance(s).

### Manual mopping - Ideal for small or congested areas.

Manual mopping is used for soil removal in small

or congested areas (including within large floors) and some mark removal. Spray cleaning may be required for heavier surface marking. (Note: In conditions of heavy soiling, perform a pre-wash by preparing a solution of Xtrafloor Cleaner Maintainer diluted in accordance with the label and pre-wash heavily soiled areas).

- Using a two-bucket mopping system, apply solution using well-wrung mop to remove soiling. (Figure 1)
- Mop using overlapping strokes. (Figure 2)
- Rinse the mop frequently and change the solution as necessary.
- Allow entire floor area to dry thoroughly.
- Remove "Caution" signs. Ensure all equipment is cleaned thoroughly after use and stored safely.

### Spray Cleaning - Ideal for small/medium size areas

Spray cleaning can be used for light soil removal in small/medium size areas and removal of most scuff marks from all floor sizes. Pre-wash (see Manual mopping) if the floor is heavily soiled.

### Tips - Dealing with spills

- Spills of water, grease, food, chemicals and other foreign matter may cause the floor to become slippery.
- Wipe up spills immediately with an absorbent cloth and then wash thoroughly using Xtrafloor Spot Remover as directed on the label or properly diluted Xtrafloor Cleaner Maintainer until the spill area is completely clean.
- Allow the floor to dry thoroughly.

### Notes

- Clever products should not be buffed with any pad more abrasive than a red 3M pad (or equivalent).
- Entrance mats, when properly serviced, can effectively remove any abrasive and foreign materials from foot traffic and cut down on tracked in water. Clever recommend a minimum of two full strides of entrance matting.

### Preventative maintenance

- Place non-rubber doormats at entrances to stop large amounts of dirt from getting indoors.
- Use felt under furniture and chair legs. Rolling office chairs should be fitted with non-rubber casters.
- Clean the floor at least once a week with a vacuum cleaner or mop. You will need to do this more often if you use the floor intensively.
- We advise that you only use recommended cleaning products, as aggressive cleaning products may damage the floor.
- Stiletto heels can also damage the floor.
- Avoid long-lasting exposure to direct sunlight. Use curtains or blinds at peak times to minimise the effect of direct sunlight. Most types of floor discolor under the influence of direct sunlight. To avoid colour discrepancies, you should move the floor coverings present with a certain degree of regularity.

Please request samples as colours may vary during printing of brochures. Colours may vary from batch to batch. Terms and Conditions can be viewed at [www.enviroclad.com/terms](http://www.enviroclad.com/terms)